



Europeana Prototype Architecture

Click to edit Master subtitle style
Bram van der Werf
Europeana v1.0 kick-off meetings

- What is the Europeana Prototype?
- Purpose of this presentation
- Evolution from Maquette to v0.3 and beyond
- Deployment diagram of current production environment
- Breakdown of components
 - . Dashboard management interface
 - . Image server
 - . SOLR search server
 - . Portal front-end application
 - . Master/Slave replication setup

What is the Europeana Prototype?

- The Europeana prototype is a proof-of-concept environment to:
 - Validate candidate technologies for the v1.0 release with regards to searching, aligning semantics in a multidimensional content space, cross-lingual and cross-cultural information retrieval
 - Get hands on experience with ingesting and mapping a plethora of: metadata formats, languages, controlled vocabularies, etc.
 - Start building a pan-european network of content aggregators and cultural heritage partners
 - Validate strategies to guarantee future scalability, maintainability, agility and extensibility of the Europeana business model.

- Communicate high-level deployment architecture of the Europeana Prototype that is currently in production
- Give insight in how the current '*ingestion workflow*' feeds into the production environment.
- But not:
 - A review of how the current relates to EDLnet D2.5 'Europeana Outline Functional Specification', especially 3.3 *Functional Model Overview* and 3.1 *Logical data model*.
 - An in depth overview of technologies used.
 - A review of what did and did not work during the prototype development

Prototype evolution

- Maquette (January 2008)
- Blue design prototype v0.0 'Styx' (June 2008)
 - .500.000 records searchable
 - .Release under password protection to network partners
- Salter-Baxter design prototype v0.1 (November 2008)
 - .4.5 million records searchable
 - .Official release in Brussel by EU Commission president Barosso
- New production environment release v0.2 (Christmas 2008)
 - .Scaled to handle 8000 concurrent users
- MyEuropeana release v0.3 (March 2009)
 - .Re-enabled MyEuropeana login user-space environment

Deployment diagram breakdown

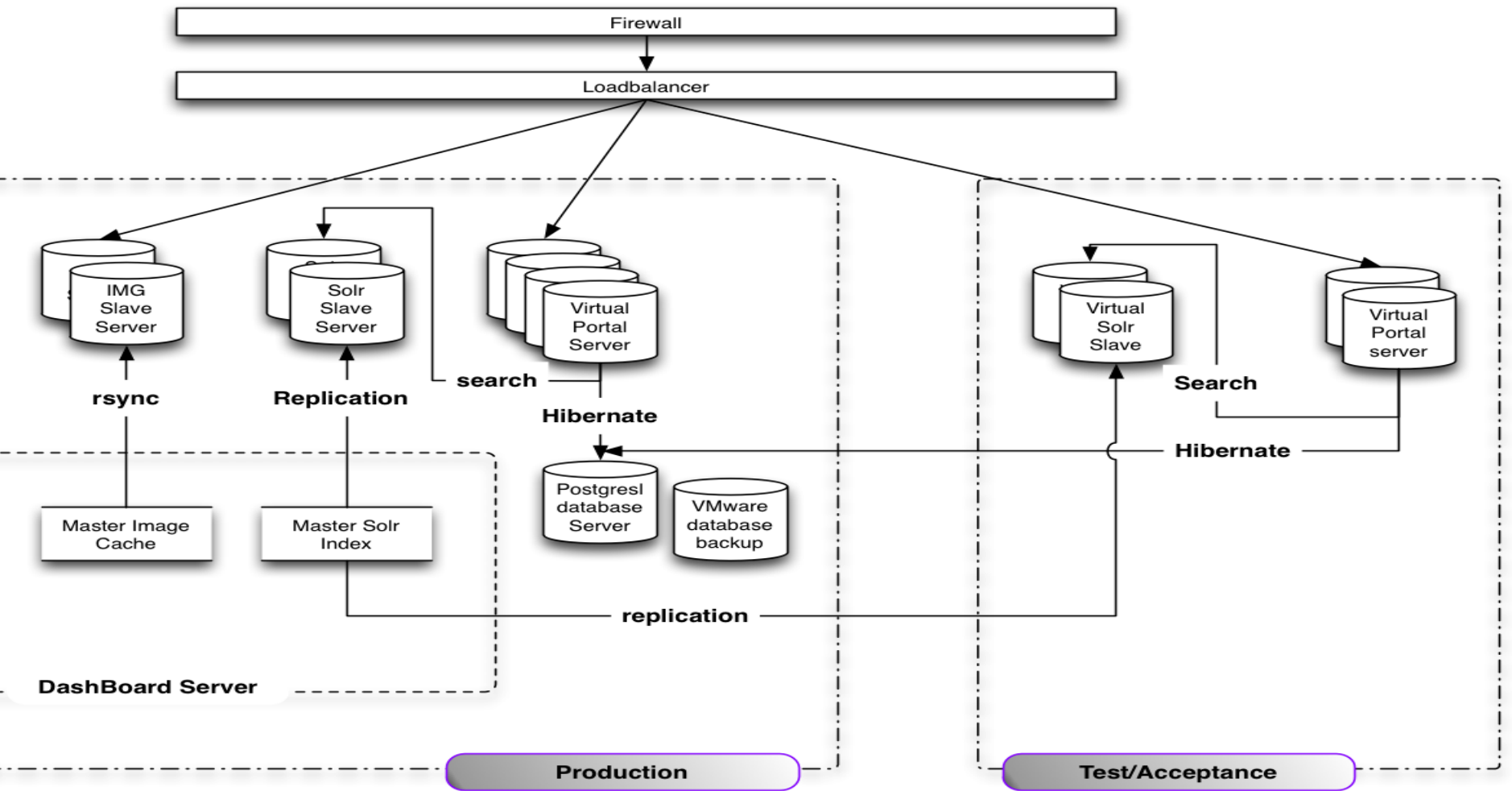


Image Server (1)

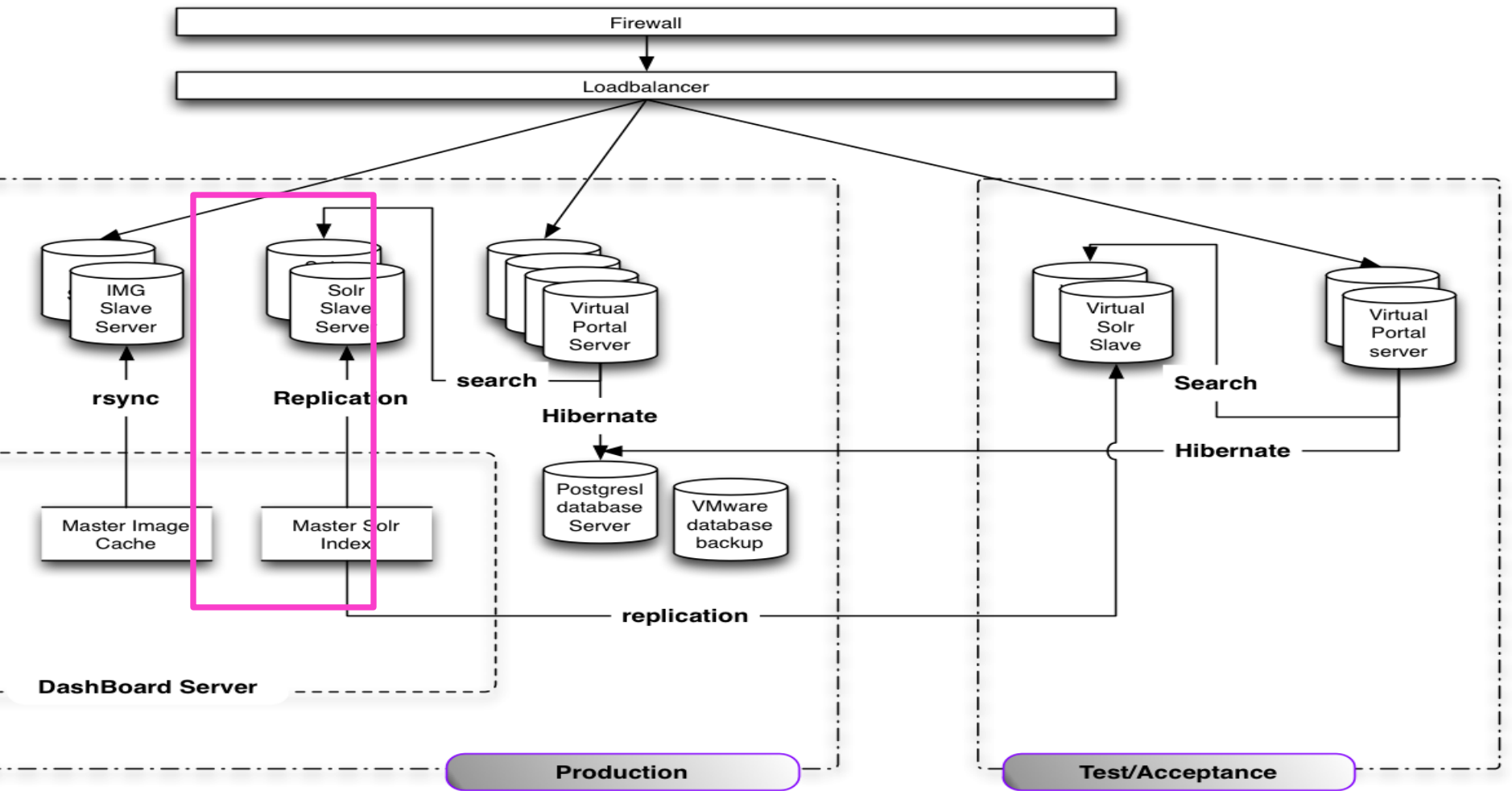
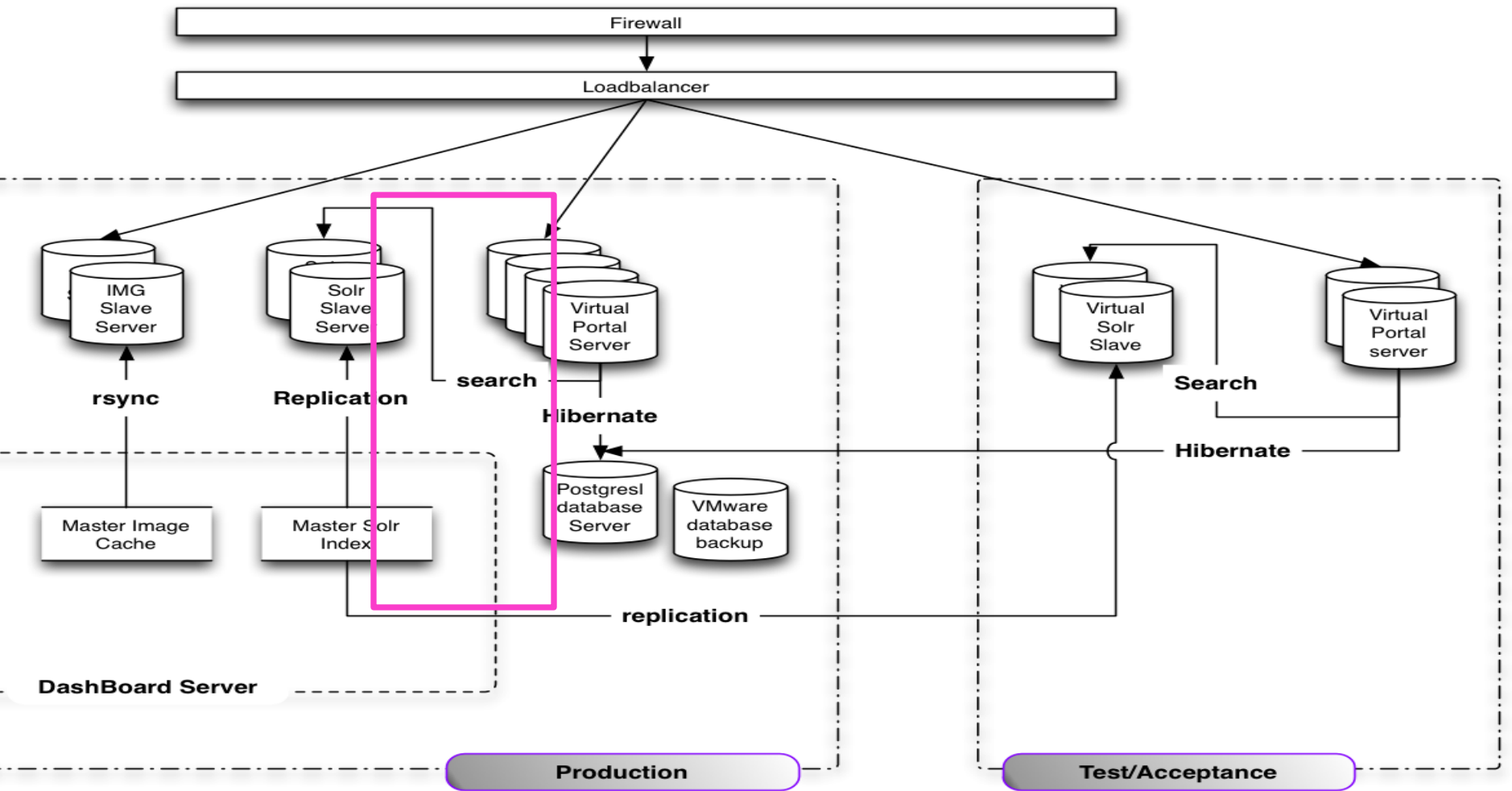


Image Server (2)

- ESE-element '*eupeana:object*' uri's are preprocessed using ImageMagick and stored in 4096 folders (=163) as SHA1 hashed strings for very fast retrieval
- Simple cache servlet for retrieval of the object as http-requests from the users' browser
- Replication:
 - . Thumbnails are cached on the Dashboard server that function as the 'Image Cache' Master
 - . Master 'Image Cache' is synced with production slaves every hour via rsync
- Statistics: served over 75 million images in first 3 months of 2009

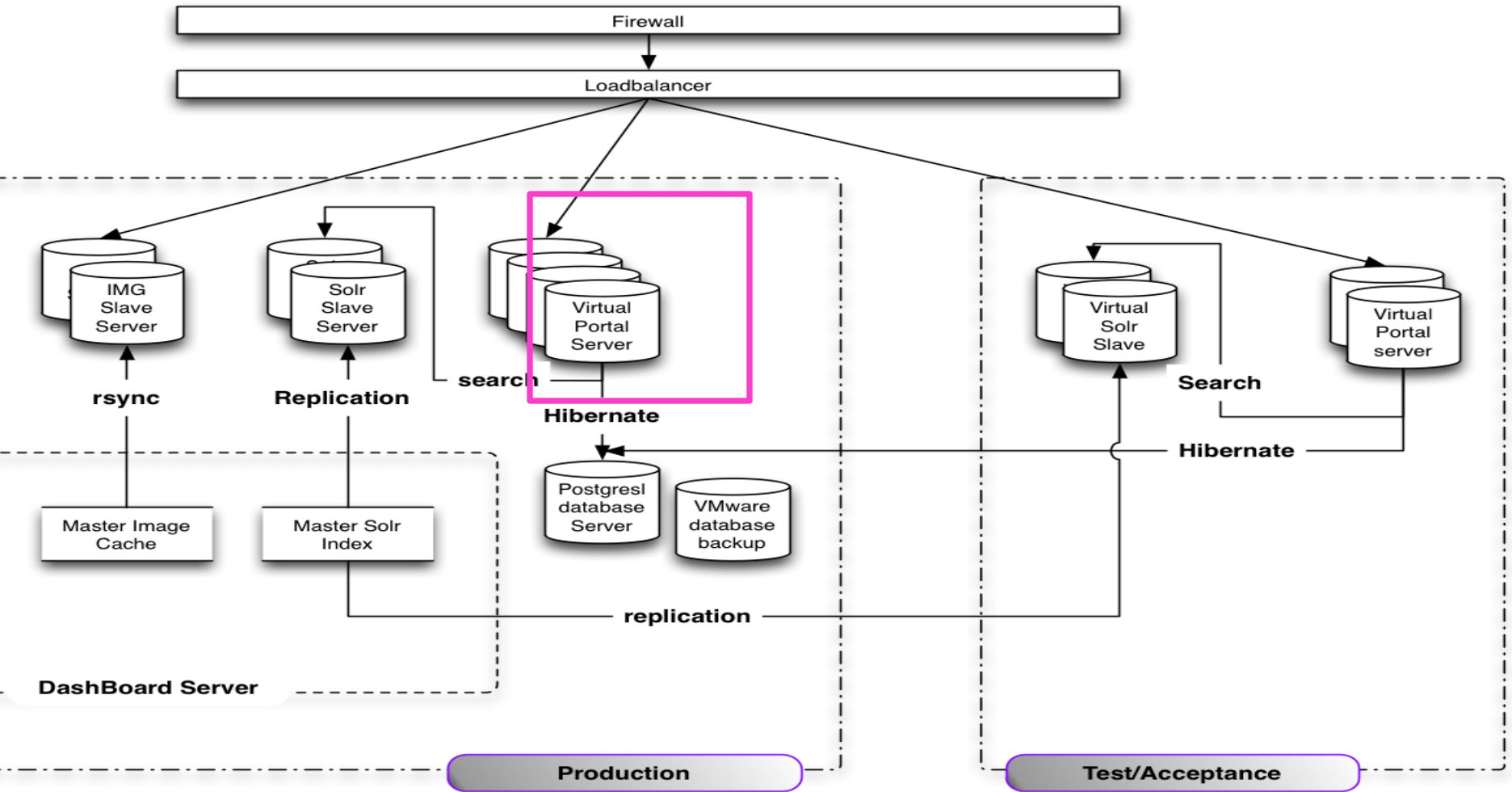
SOLR Search Server (1)



SOLR Search Server (2)

- Apache SOLR v1.3 <http://lucene.apache.org/solr/>
- REST-based interface for querying and updating the index
- Built in faceting, related item search, spellchecking 'did you mean', replication, result-caching, multiple output formats
- Fast and scalable indexing. Known to scale into billions of records
- Multithreaded indexing. Current single threaded indexing speed ca. 1 million records per hour.
- v1.4 additions: carrot2 clustering algorithms, autosuggestion, faster numerical range queries (TrieRange Queries) for temporal and spatial querying

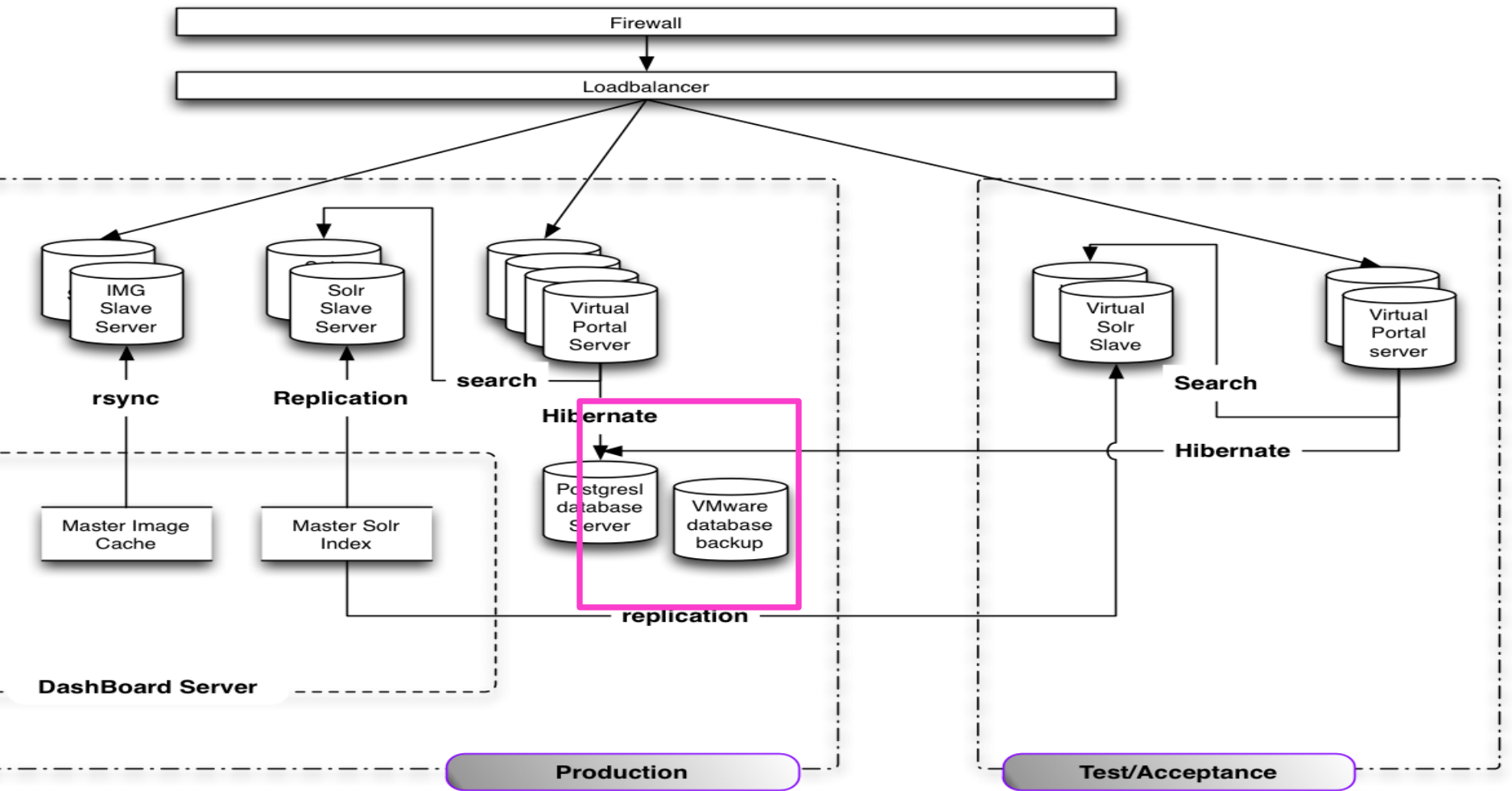
Portal front-end application (1)



Portal front-end application (2)

- Is the main Europeana Graphical User Interface:
 - Dynamically renders the pages
 - Reformulate queries of SOLR
 - Handles user authentication and localisation
- Statistics: served over 13 million pages and processed over 70 million http-request in the first 3 months of 2009

Database Server (1)



Database Server (2)

- PostgreSQL 8.3 database server

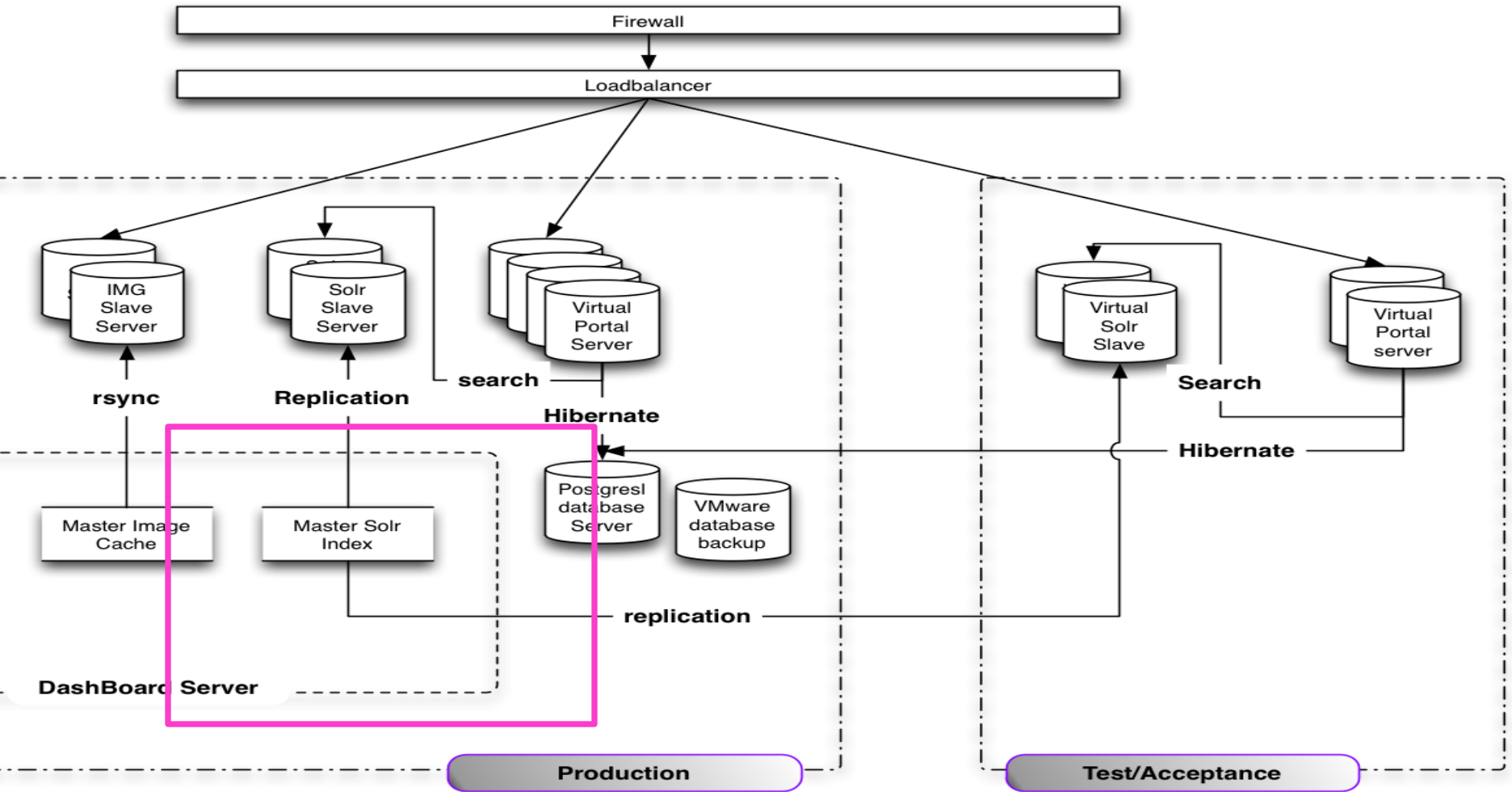
- Contains:

- Europeana records, Europeana Objects, Users, Saved searches/tags/items, interface translations, static pages, content for partner page (i.e. partners and contributors), etc.

- Main usage:

- Datastore for ingested material.
- Uses europeana object table for caching process
- Uses european records table for indexing process
- Dynamically load interface translations and translated static pages (v0.3.1)
- User validation and management

Dashboard Administration Interface (1)



Dashboard Administration Interface (2)

- Relative new comer to the Europeana prototype space
- Runs on the Dashboard Server
- Multi-user and multi-role administrative interface to:
 - Edit user roles
 - Collection management: importing, indexing, caching
 - Edit interface and staticpage translations
 - Manage partner and contributors list
 - Provide content related statistics
- Future extensions:
 - Ingestion wizard?
 - Upload, analyse, map, normalise, test content in sandbox, etc.

Questions?

Bram van der Werf
Technical Director **Europeana**
bram.vanderwerf@kb.nl